

INTRODUCTION

EXPLANATION

T. foetus can cause chronic diarrhea in felines. Evidence of this infection has been found widely and further research is being conducted².

PROCEDURE PRINCIPALS

The InPouch™ TF-Feline is a self-contained system for the detection of *T. foetus* in feline fecal samples. The proprietary medium is selective for the transport and growth of the trichomonad while inhibiting the growth of mold, bacteria and yeast which could interfere with diagnosis.

The InPouch™ device consists of clear high-barrier, oxygen-resistant plastic which is formed into an enclosed pouch in the shape of two “V”- like chambers connected by a narrow passage (cannula). This two-compartment system allows direct (wet mount) observation on a newly inoculated specimen in the upper chamber before expressing it into the lower chamber for culture.

The InPouch™ is sensitive enough that an inoculum containing as little as one organism is sufficient to potentially result in a presumptive positive test.

Presumptive positive pouches for *T. foetus* Feline can be tested via PCR for verification. Transport and off-site testing can be preformed easily due to the flexible packaging and integral design of the pouch.

REAGENTS

InPouch™ Medium contains: tripticase, protease, peptone, yeast extract, maltose (and other nutrients), amino acids, slats, antifungal and antimicrobial agents in a normal saline phosphate buffer.

PRECAUTIONS

FOR VETERINARY AND *IN VITRO* DIAGNOSTIC USE ONLY. All specimens are to be handled according to CDC-NIH regulations for potentially infectious organisms at BIOSAFETY LEVEL 2.

STORAGE AND SHELF LIFE

DO NOT REFRIGERATE OR FREEZE the InPouch™ device. Store any uninoculated pouches horizontally at room temperature (18-25°C) away from direct sunlight. Product shelf life is 12 months from the date of manufacture. DO NOT USE THE InPouch™ if it leaks, appears cloudy, dark brown, dry/sticky or has a syrup-like consistency.

USING THE TEST

SAMPLE COLLECTION

Materials needed:

- InPouch™ Test(s)
- Viewing clip (Optional and SOLD SEPARATELY)
- Disposable gloves
- Infusion/insemination pipette
- 20mL syringe per sample, OR
- Sterile cotton-tipped wooden applicators
- Laboratory incubator & microscope

METHOD 1

- Insert sterile cotton swab directly into feline’s rectum. It is unnecessary to collect additional feces with the rectal swab since *T. foetus* “clings” to the cellular lining of the colon. Any feces obtained should only coat the swab. The swab should be free of anything that could kill *T. foetus*; i.e. lubricants.

METHOD 2

- Alternatively, with a clean wooden applicator or swab, obtain approximately 0.03g of feces (smaller than a peppercorn) that has been voided within 1-2 hours of collection.

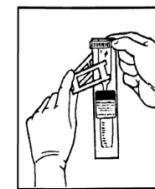
Specimen should NOT be refrigerated or frozen.

INOCULATION

1. Identify patient, specimen location, date of inoculation, etc. on the InPouch™ label prior to opening.
2. Express the media in the pouch so that there is approximately 1mL in the upper chamber of the InPouch™. **Be sure the liquid is well below the closure tape to prevent fluid from spilling or leaking out the top.**
3. Tear open the pouch at the notches just above the tape closure; open the pouch by gently pulling apart the tape’s middle tabs.
4. Insert the sample into the liquid within the chamber; the sample can be “milked” by pinching/rolling the sample between the pouch walls. Dispose of swab/applicator.



5. FOR WET MOUNT ANALYSIS- pinch the opening back together. Roll the tape closure twice and secure end tabs. Observe top chamber microscopically.



6. FOR CULTURE OR TRANSPORT- Fully express sample into the lower chamber; Roll tape end-on-end until it reaches the top of the label. Secure end tabs to “lock” the roll.

TRANSPORT

The InPouch™ is an excellent device for sample transport; the plastic pouch resists damage and maintains viability. Inoculated pouches must be maintained between 15-37°C.

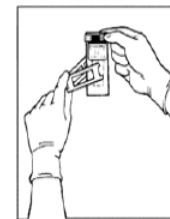
INCUBATION

Incubate pouch vertically at 37°C. After initial incubation, store the pouch vertically in the dark at room temperature, incubation is not necessary.

READING THE RESULTS

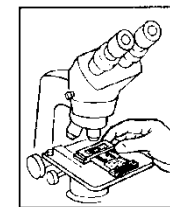
MICROSCOPIC EVALUATION

Place the (optional) Viewing Clip horizontally over the lower chamber of the inoculated pouch and lock the clip. Observe using a low-powered microscope (10x). A higher power microscope (20-30x) may be needed for confirmation.



NOTE: Trichomonads gravitate to the edges of the InPouch™ chamber. Briefly scan the edges being sure to focus in on the liquid and not the textured plastic. Do not mistake Brownian motion of microscopic debris as evident *Trichomonas* activity.

Repeat evaluations daily for 2 - 4 days (post-inoculation) for confirmed presence of Trichomonads. If no viable motions are detected, incubate the sample at 35°C to 37°C every-other day for up to twelve (12) days.



VIEWING TIP: Pull the pouch up and down across the edge of a table 3-4 times before reading the pouch.

PROCEDURE LIMITATIONS

P.hominis and *Giardia* are contaminants commonly found in feline samples, these contaminants will not survive within the pouch beyond 24hrs and will not affect product performance. Though uncommon, *P.hominis* CAN grow. PCR testing is the only way to distinguish *Trichomonads*².

The InPouch™ medium suppresses but does not eliminate yeast and bacterial growth. Gas build-up from bacterial growth may be relieved by opening the pouch out of doors or within a BIOSAFETY LEVEL 2 hood.

NOTE: Too much fecal material may cause excessive cloudiness; subculture as necessary into another uninoculated TF-Feline InPouch™.

DISPOSAL

All InPouch™ devices are regarded as BIOSAFETY LEVEL 2 and must be destroyed by autoclave sterilization or equivalent means.

United States ONLY:

***Tritrichomonas foetus* Feline LIVE CULTURE**

Biomed Diagnostics, Inc. maintains a TF-Feline live culture isolate. This positive-control culture can be purchased from the Biomed catalog (**Item #11-1115**).

Inoculate a new pouch with 40µl (1 drop) of stock every 3 - 4 days (when growth concentration reaches 1x10⁵/mL) to maintain a viable stock culture. Incubate newly inoculated pouches at 37°C for 24 hours, transfer to 32°C (culture is also stable at room temperature).

SAFETY

WARNING

THIS PRODUCT CONTAINS A CHEMICAL KNOWN TO THE STATE OF CALIFORNIA TO CAUSE BIRTH DEFECTS AND OTHER REPRODUCTIVE HARM.

REFERENCES

¹ Gookin. et. al. Use of Commercially Available Culture System for the Diagnosis of *Tritrichomonas foetus* in Cats. J. Am. Vet. Med. Assoc. 2003; 222 1376-1379.

² Gookin. J. L. et. al. Identification of *Pentatrichomonas hominis* in Feline Fecal Samples by Polymerase Chain Assay. Vet Parasitology. 2007; 145: 11-15

InPouch™ TF-Feline

Tritrichomonas foetus TEST

| | |
|---------------------|--------------|
| Catalog No. 11-1107 | 5 Test Box |
| Catalog No. 11-1110 | 10 Test Box |
| Catalog No. 11-1103 | 100 Pack Box |
| Catalog No. 11-1115 | Live Culture |

A SELECTIVE CULTURE SYSTEM
FOR THE DIAGNOSIS OF
Tritrichomonas foetus Feline

For Veterinary Use Only

For *In Vitro* Diagnostic Use Only



Manufactured by:

Biomed Diagnostics, Inc.

PO Box 2366 • White City, OR 97503
tel. (800)-964-6466 • fax. (541) 830-3001

info@biomeddiagnostics.com
www.biomeddiagnostics.com